



CHINA BRITAIN MEDICAL
AND DENTAL ASSOCIATION
CBMDA.ORG



CHINA BRITAIN MEDICAL
AND DENTAL ACADEMY
CBMDA.CO.UK



2018-2019
Two Year Four Term
Certificate Programme for Qualified Dentists
Verifiable CPD credit as per General Dental Council
United Kingdom

IMPLANT DENTISTRY MASTERCLASS II

Prof. Stephen Dunne

BDS PhD LDSRCS(Eng) FDSRCS(Eng)

King's College London Dental Institute
Maurice Wohl Professor of Primary Dental Care
Professor of Advanced General Dental Practice
King's College Hospital NHS Foundation Trust
Consultant in Restorative Dentistry
CBMDA MasterClass Programme Director

In collaboration with China Britain Medical and Dental Association (CBMDA)
Programmes are designed for dental professionals qualified in the People's Republic of China





Functional – Aesthetic – Patient’s Interest



Multiple fractured teeth and jaw following accident with a baseball bat – 1996

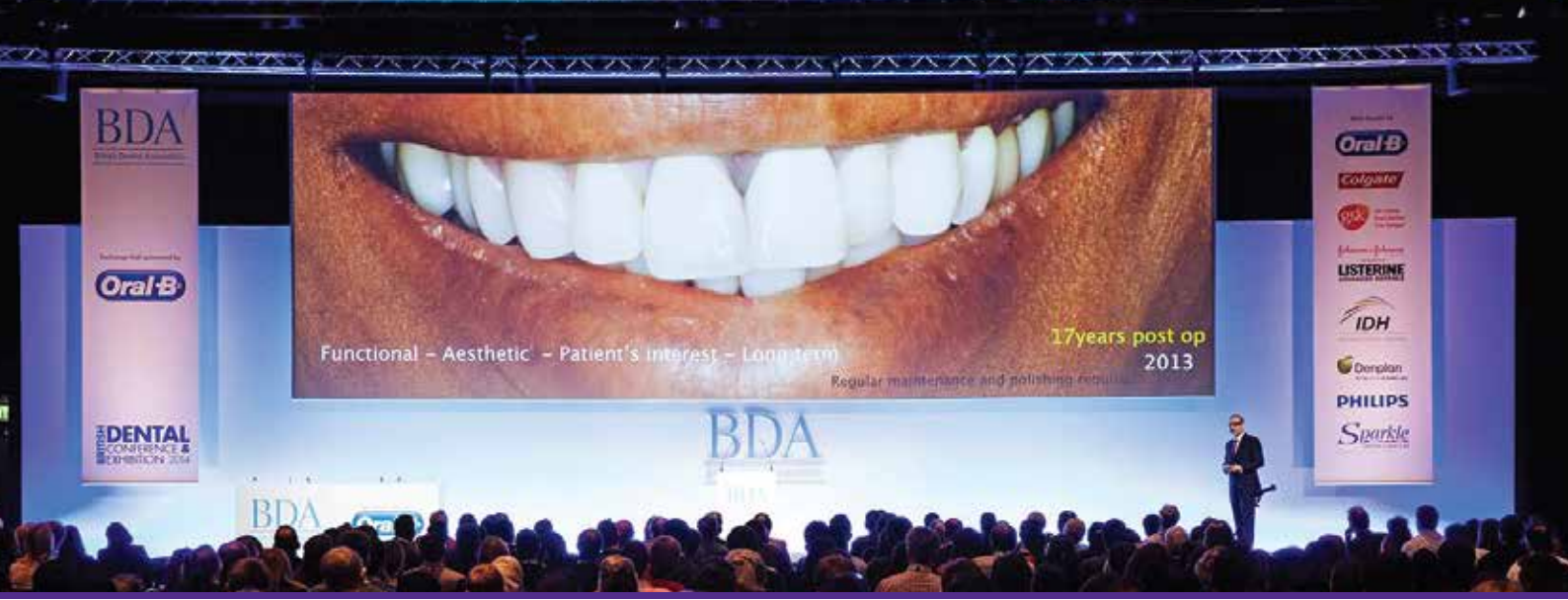
NO RESTRICTION OF HEALTHY TOOTH TISSUE



Fractured teeth restored with directly bonded composite restorations – 1997



CBMDA Academy	3
CBMDA Association	4
CBMDA Facilities – Dental	5
Programme Details	6
Clinical Staff	13
Other Programmes	16



Functional – Aesthetic – Patient’s interest – Long term

17years post op
2013

Regular maintenance and polishing required



CHINA BRITAIN MEDICAL AND DENTAL ASSOCIATION
 P: +44 (0) 208 352 3121 E: info@cbmda.org
 M: +44 (0) 771 863 2387 W: www.cbmda.org
 A: 1 Primrose Street, London, EC2A 2EX



AmryBio (ShangHai) Ltd.
 P: +86 21 5999 0301 M: +86 137 9532 5993
 W: www.amrybio.com E: info@amrybio.com
 A: 1103, No.2500 Zhenbei Road, Shanghai, China.Postcode: 200333



China Britain Medical and Dental Academy

One of the world's top centres of excellence

CBMDA was founded with simple premises:

- To provide advanced clinical and scientific knowledge to doctors and dentists from China and the UK.
- To make overseas exchange programmes in the UK accessible, efficient, effective for Chinese professionals.
- To provide a networking platform for medical and dental professionals from both China and the UK.

Renowned international reputation

Ever since its early founding date, China Britain Medical and Dental Academy has been providing doctors and dentists from both China and the UK with a rich and diverse learning environment. Our unparalleled teaching methods help to launch students into the successful future they have always dreamed of. China Britain Medical and Dental Academy with its head office located in central London and its students participating in different programmes across the UK is in its fast pace to become the leading provider of Continuing Professional Development (CPD) courses and MasterClass.

Patient Care

The CBMDA the Academy was founded by a group of passionate medical and dental professionals, subject leaders from both UK and China, they are now devoting their energy and passion into passing on the most advanced scientific and clinical knowledge and skills, to ultimately benefit our patients all around the world. Learning sophisticated clinical care and research methodology lie at the heart of all our postgraduate programmes.





China Britain Medical and Dental Association

Our Mission

China Britain Medical and Dental Association (CBMDA.org) is a non-for-profit organisation. The association provides a free networking platform for doctors and dentists from both China and the UK. We offer free content such as videos and articles of the latest medical and dental research and development. We give introduction courses of the latest devices, treatment techniques covering all medical and dental subjects.

CBMDA the association also offers membership only content and provides a wide range of services/benefits to its individual and corporate members.

Industry Activities

CBMDA the Association is actively supporting and bringing together the Chinese and UK's life sciences companies, corporate partners and investors. Our 1000-plus Member companies are located across the globe, benefiting from our networking, partnering, purchasing, training, advising and advocacy activities.



Association Funding for CPD Courses

There are a number of sources of funding available for CBMDA students. These include a significant package of competitive CBMDA bursaries and scholarships in a range of subject areas. Please send your enquiries to enquiries@cbmda.org



CBMDA Academy Facilities - Dental

Our Facilities

World Class Centre for CPD Dental & Dental Continuing Education Courses.

Whether your time with us is as course participant or course lecturer, you will have the prestigious Harley Street, The Royal Society of Medicine, University College London Eastman Dental Institute and the Royal College of Surgeons of England training facilities to choose from. You will also find one of the available-for-hire central London training locations, King's College London LonDEC's £2.4m CPD dental facilities to be amongst the best in the world.



Close to Waterloo mainline station, LonDEC is part of King's College London Dental Institute and based in the Franklin-Wilkins building at King's College London Waterloo Campus. As well as providing an ideal clinical skills training facility for King's College London Dental Institute postgraduate students, LonDEC's state-of-the-art facilities are available for CBMDA delegates from China for CPD dental lectures and hands-on training.

As a dedicated Dental Continuing Education Courses facility, LonDEC's highly sophisticated equipment and congenial ambience offer a high-specification and comfortable environment to learn in.





Programme Details

OVERVIEW

STRUCTURE

ADMISSION

LEARNING

FEES

OVERVIEW

MasterClass in Implant Dentistry is an innovative programme that will give you the skills and knowledge to provide high-quality service to your patients. Our programme advisors, clinical teachers are all experts in their field. You will have the opportunity to gain knowledge from each of them. We like to think our training courses make it fun to learn, whilst gaining the maximum amount of practical 'hands on' training with live models. Each course will include consideration of patient risk assessment of future disease and guidance on clinical prevention.

Key Benefits

- Centre of excellence for teaching and research in dentistry.
- Sound academic theory and high quality practical training.
- Intensive face-to-face residential blocks to learn and practice contemporary clinical techniques at worldclass training facilities.
- Course material delivered by a team of highly experienced clinical tutors and academics, many of whom are world-leaders in their field.





TERM ONE
Foundations of Oral Implantology and Prosthodontics
Beijing, China



PROGRAMME STRUCTURE

DAY 1

- Fundamentals aspects of implant dentistry
- Oral and maxillofacial anatomy
- Clinical applications of oral radiography
- Indications and contraindications of implant therapy
- Hands-on: implant osteotomy on Type I-Type IV bone blocks

- Clinical features of different implant designs
- Surface treatment and connection design: features and clinical techniques
- Lunch
- Basic steps of implant surgery
- Hands-on: implant placement in a partially edentulous model

DAY 2

DAY 3

- Preparations in the operation room
- Asepsis and suture techniques
- Lunch
- Model operation: take an impression for an implant
- Live implant surgery and Q&A

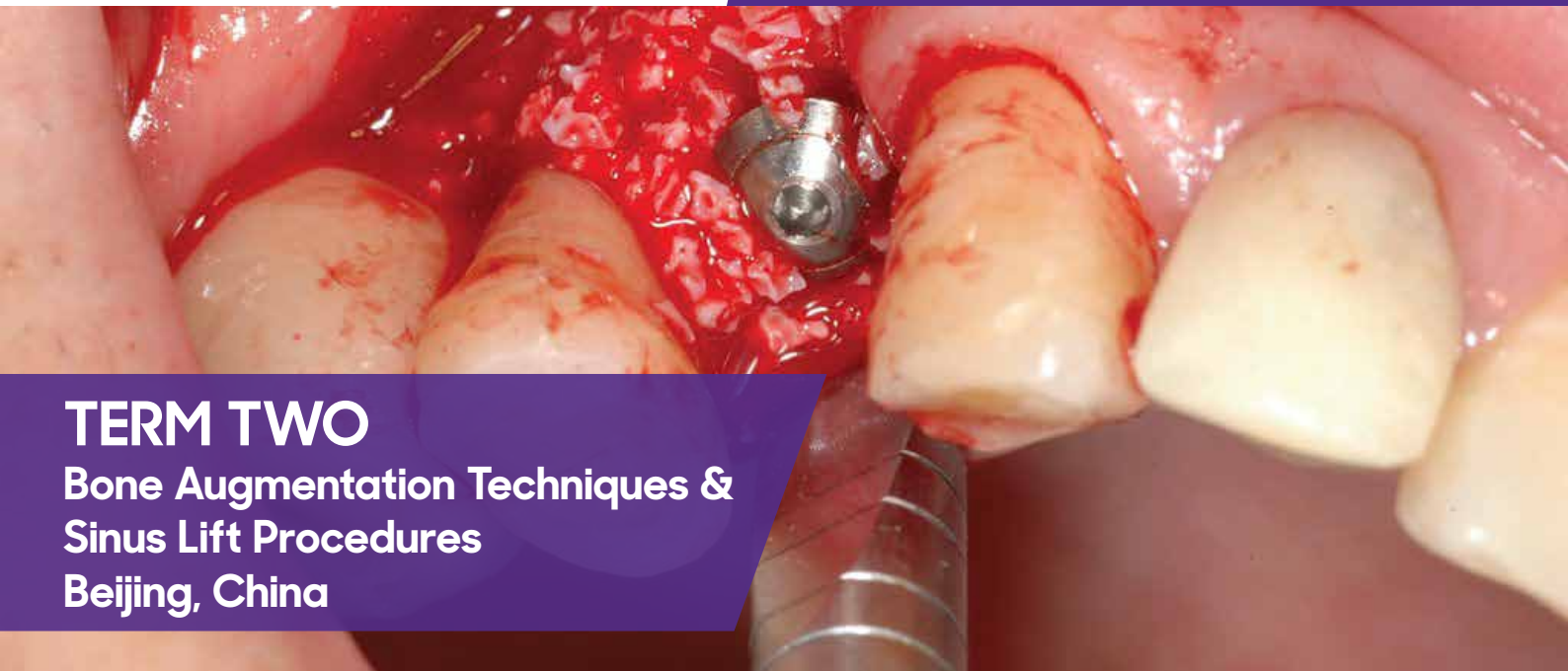
- A brief introduction of prosthetic components of implant systems
- Choices of different impression materials and the basic workflow
- Lunch
- Hands-on: taking impression for an implant
- Group Discussion

DAY 4

DAY 5

- Choices of implant abutments
- Mechanical principles of implant abutment design
- Lunch
- Restoration delivery: options of different connections and the basic workflow
- Hands-on: deliver an implant-supported crown





TERM TWO
Bone Augmentation Techniques & Sinus Lift Procedures
Beijing, China

PROGRAMME STRUCTURE

DAY 1

- Theory: Guided Bone Regeneration (GBR)
- Types of bone graft materials and your clinical options
- Biomaterial and biomembrance
- Hands-on: GBR procedure on a deficient alveolar ridge model
- Tension reduction of the soft tissue and practice of different suture techniques

- Clinical application of ridge preservation technique
- Clinical application of minimally-invasive tooth extraction
- Lunch
- Atraumatic root traction to preserve ridge width
- Hands-on: atraumatic tooth extraction and ridge preservation

DAY 2

DAY 3

- Anatomic fundamentals of the sinus and radiographic interpretation
- Development of crestal approach of sinus lift and technical essentials
- Lunch
- Hands-on: crestal approach of sinus lift
- Group Study

- Key Techniques in lateral approach of sinus lift
- Prevention and infection control during perioperative period
- Lunch
- Hands-on: lateral approach of sinus lift
- Group Study

DAY 4

DAY 5

- Vertical ridge augmentation: technical analysis
- Onlay graft technique
- Clinical applications of bone-split technique
- A brief introduction of bone-ring technique
- Clinical applications of distraction osteogenesis technique.





TERM THREE

Implant in the Aesthetic Zone
Immediate Treatment and
Periodontal Management
Beijing, China



PROGRAMME STRUCTURE

DAY 1

- Management of periodontal diseases before implant placement
- Key techniques of implant treatment for patients with periodontal conditions
- Lunch
- Etiology and prevention of peri-implantitis
- Case Studies

- Clinical mind in peri-implantitis management
- Clinical treatment protocols for peri-implantitis
- Lunch
- Free Gingival Grafting Techniques
- Hands-on: Free Gingival Grafting Techniques

DAY 2

DAY 3

- Aesthetic analysis of the anterior region
- Optimised implant position of aesthetic implant placement
- Choices of implants of aesthetic implant placement
- Key techniques in provisional restorations for implants in the aesthetic zone
- Hands-on: Make a provisional restoration

- Evidence-based analysis of immediate implant in the anterior region
- Clinical essentials of immediate implant in the anterior region
- Lunch
- Immediate implant placement and bone graft
- Hands-on: immediate implant technique in the anterior region

DAY 4

DAY 5

- Key techniques for immediate implant placement in the posterior region
- Risk assessment and control
- Lunch
- Hard and soft tissue management after aesthetic implant failure in the anterior region
- Design principles of the implant prosthesis for multiple missing anterior teeth





TERM FOUR
Edentulous Implant
Restoration Techniques
London, United Kingdom



PROGRAMME STRUCTURE

DAY 1

- Anatomic features of the edentulous patients and surgical risks
- Restorative alternatives of edentulous patients
- Lunch
- Design principles of implant prostheses for edentulous patients: fixed or removable?
- Case Studies

DAY 2

- Choices of the attachment systems of implant prostheses for edentulous jaws
- Technical and clinical essentials of bar-clip implant-supported prostheses
- Lunch
- Clinical features of ball socket attachment, magnetic attachment, and LOCATOR
- Hands-on: Complete an implant prosthesis using LOCATOR.

DAY 3

- Biological principles of fixed implant-supported restorations for edentulous jaws
- Mechanical principles of fixed implant-supported restorations for edentulous jaws
- Lunch
- Design options in fixed implant-supported restorations for edentulous jaws
- Sectional or full-arch prosthesis

DAY 4

- Pros and cons of full-arch restorations
- Fundamentals of All-on-4 concept
- Lunch
- Analysis of All-on-4 surgical procedures
- Hands-on: All-on-4 surgery for an edentulous jaw

DAY 5

- Design principles of Immediate loaded restorations for edentulous jaws
- The fabrication workflow of immediate loaded restorations for edentulous jaws
- Applications of digital surgical guide and digital navigation techniques in implant surgery
- Make an immediate loaded implant-supported provisional restoration for an edentulous jaw.
- Evening Graduation Ceremony, Certificate Ceremony.





Programme Details

OVERVIEW

STRUCTURE

ADMISSION

LEARNING

FEES

ADMISSION

Qualification and employment status:

A dental qualification acceptable to China Britain Medical and Dental Academy.

Employment as a dentist in a dental practice, dental school, hospital, or community dental services environment.

Access to facilities and equipment.

Adequate clinical facilities and access to patients requiring treatment relevant to your subject area.

English requirements should be the following:

Simultaneous Interpretation between Mandarin and English is available for Masterclass and other CPD courses. IELTS (overall score of 6.5, with 6.0 in the Writing and Speaking modules) for postgraduate hospital exchange programmes.

Chinese students attending clinical days will require an appropriate travel visa according to CBMDA regulations. Further advice is obtainable via CBMDA International Students Adviser.

Email: info@cbmda.org

LEARNING

You'll learn through a combination of:

50% lectures, interactive seminars, treatment planning.

50% skills laboratory and clinic hands-on training.

There will be ample phantom head practice of clinical procedures and video demonstrations, as well as clinic practice of records and photography and a review of current literature.

FEES

Tuition fee: £13,500

Tuition fee + flights to & from the UK + accomodation, meal (excl. dinner) and travel in the UK during course preiod: £15,000

Please send application form (**download from: www.cbmda.co.uk**) to applications@cbmda.org

There are a number of sources of funding available for CBMDA students. These include a significant package of competitive CBMDA bursaries and scholarships in a range of subject areas. Please send your enquiries to enquiries@cbmda.org





Certificate Awarding Ceremony

The Royal Society of Medicine



The ROYAL SOCIETY of MEDICINE

The Society was established in 1805 as Medical and Chirurgical Society of London, meeting in two rooms in barristers' chambers at Gray's Inn and then moving to Lincoln's Inn Fields where it stayed for 25 years. In 1834 the Society moved to Berners Street and was granted a Royal Charter by King William IV.

In 1889 under the leadership of Sir John MacAlister, a Building Committee chaired by Timothy Holmes supervised the move of the quarters of the Society from Berners Street to 20 Hanover Square. In 1905 an eleven-member committee headed by Sir Richard Douglas Powell organised the celebration of the Society's centenary. Two years later the Royal Medical and Chirurgical Society of London came together with seventeen specialist medical societies and, with a supplementary Royal Charter granted by Edward VII, became the Royal Society of Medicine. In 1910 the Society acquired the site on the corner of Wimpole Street and Henrietta Place, which was opened by King George V and Queen Mary in May 1912.



The Royal Society of Medicine (RSM) is one of the major providers of accredited postgraduate medical education in the United Kingdom. Each year, the RSM organises over 400 academic and public events, spanning 56 areas of special interest providing a multi-disciplinary forum for discussion and debate. The RSM is home to one of the largest medical libraries in Europe, with an extensive collection of books, journals, electronic journals and online medical databases. As well as providing medical education, the Society aims to promote an exchange of information and ideas on the science, practice and organisation of medicine, both within the health professions and with responsible and informed public opinion.



CHINA BRITAIN MEDICAL AND DENTAL ASSOCIATION
P: +44 (0) 208 352 3121 E: info@cbmda.org
M: +44 (0) 771 863 2387 W: www.cbmda.org
A: 1 Primrose Street, London, EC2A 2EX



AmryBio (ShangHai) Ltd.

P: +86 21 5999 0301 M: +86 137 9532 5993
W: www.amrybio.com E: info@amrybio.com
A: 1103, No.2500 Zhenbei Road, Shanghai, China.Postcode: 200333



Programme Directors

Masterclass Programme Directors



Professor Stephen Dunne

Emeritus Maurice Wohl Foundation Professor of General Dental Practice, King's College London. Clinical Director, Genix Healthcare Ltd. Specialist in Restorative Dentistry. Clinical Expert Adviser to the General Dental Council, UK. Immediate Past-President and Executive Committee Member, European Federation of Conservative Dentistry. Author of over 150 peer-reviewed scientific papers and textbooks External Examiner to Universities in the UK and overseas.

Dr. Shih-Chieh LO BS, DDS, MS

Dr. Lo is a private practitioner from Taipei. He is a graduate of Taipei Medical University. He has then been awarded Master Degree of Surgery by China Dalian Medical University. He has completed the USC-Taiwan Comprehensive Surgical and Restorative Implant Training Programme in USC in 2014, 2016 and 2017. He has then been certified by the USC-China Esthetic Dentistry Training Program in 2015. Dr. Lo was also awarded by CEREC Ortho TTT programme in 2015 and SPEAR Education - Harvard University occlusion programme in 2016. He also recently completed the MRC training courses in becoming an Invisalign Diamon provider and speaker in 2016 and 2017.



Dr Subir Banerji BDS MClintDent PhD MFGDP(UK)RCS FICOI FICD

Master Degree Aesthetics Programme Director of King's, qualified with a Bachelor of Dental Surgery from The University of Newcastle Upon Tyne Dental School, UK. He completed an advanced course in Restorative Dentistry at The Eastman Dental Hospital, London and his Fellowship of the International Congress of Oral Implantologists. He gained his Masters in Clinical Dentistry (Prosthodontics) from the University of London and PhD from the University of London and the Statutes of Kings College London. He is author and Editor in Chief for "Practical Procedure's in Aesthetic Dentistry" He has conducted several Postgraduate and Master's level courses in aesthetics and implants in the UK, US, Europe, Australia, Hong Kong and India.





Programme Directors

Masterclass Programme Supporting Faculties

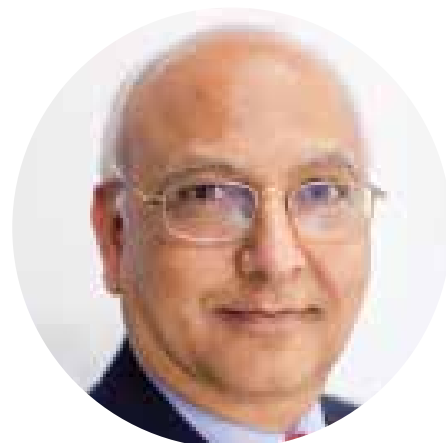


Dr. Helena Greene

Clinical Lead of Primary Dental Care King's College London
Head tutor of Primary Dental Care King's College London Dental Institute
General Secretary, European Federation of Conservative Dentistry
Senior Advisor, Dental Training Consultants, London
Member of British Society for Restorative Dentistry Council
Teaching Excellence Award for the King's College Hospital Dental Institute
Director for Student Welfare Guy's Hospital
Coordinator for final year BDS students Guy's Hospital

Dr. Russ Ladwa BDS LDS FDSRCS MGDS DGDP FFGDP.

British Dental Association Trustee & member of Education, Ethics & the Dental Team Working Group, International Affairs Committee and Chair of Health & Science Committee. President, Odontology Section, the Royal Society of Medicine 2012-13 Dean, FGDP(UK) 2009-12. Chair, Dental Vocational Training Authority 2004-06. Chair, Federation of London LDCs 2004-06. Postgraduate Dental Tutor (University of London) Central Middlesex Hospital London NW10 1990-2013. Past Dean, Faculty of General Dental Practice (UK), at the Royal College of Surgeons of England. Past President, Odontology Section of the Royal Society of Medicine.



Dr. Shamir B. Mehta BDS BSc MClinDent(Prosthodontics)(LON) MFGDP(UK).

Deputy Programme Director, MSc Aesthetic Dentistry; Senior Clinical Teacher, Department of Conservative and MI Dentistry, King's College London Dental Institute; Faculty member Academy of Dental Excellence. Independent Clinical Advisor/ Expert Witness, taking instructions from the General Dental Council and MDU, Gained over 20 peer reviewed publications, including a series on Tooth Wear Management (BDJ, 2012), The Cracked Tooth Syndrome (2010) as well as items of Practice Based Research (BDJ/ Jour of Dent), Co-Author/ Co-Editor of the "Practical Procedures in Aesthetic Dentistry," Wiley-Blackwell Publications, Manuscript Reviewer for the Primary Dental Journal (FGDP UK).





Programme Directors

Masterclass Programme Supporting Faculties



Dr. Christopher C.K. Ho BDSHons GradDipClinDent (Oral Implants), MClindent(Prostho) DClinDent(Prostho) MRACDS FPFA.

Visiting Clinical Lecturer, King's College London, Faculty member, Global Institute for Dental Education and Faculty and Board member, Academy of Dental Excellence. Dr Chris Ho is the Founder and Principal of Care Implant Dentistry and has completed his Bachelors of Dental Surgery with First Class Honours, a Graduate Diploma in Clinical Dentistry (Implant Dentistry) from the University of Sydney, and also a Masters of Clinical Dentistry (Prosthodontics) with Distinction from Kings College London. He has over twenty years of experience in complex aesthetic and implant rehabilitations.

Dr. Charles Adam .E. Slade BDS LDS RCS MFGDP(UK) MClindent (Prostho).

Clinical Lecturer, London Deanery, Clinical Teacher, King's College London Dental Institute and Faculty member, Academy of Dental Excellence. Key opinion leader Biomet 3i. In private practice, Lister House, Wimpol Street, London

Adam qualified from Guys Hospital, London in 1986. He held staff positions in maxillo facial surgery at Guys, Bromley and Sidcup hospitals and in 1999 set up in private practice focusing on restorative and cosmetic dentistry. In recent years he has focused on prosthodontic and implant based treatments working within the Eastman International Centre for Excellence in Dentistry in London. As well as working with the team at No 45 Dental, Adam also works for several corporate practices and private practices on the South coast.



Dr. Ray Zhang BDS, PhD, MD, MRCS (Eng), MRSC

Dr. Zhang completed his undergraduate training in Medicine and Dentistry at Peking University Health Science Centre and the Ministry of Health, Beijing Hospital. He then completed his specialist postgraduate training in Oral and Maxillofacial Surgery followed by 3 years hospital residence programme at Peking University, School and Hospital of Stomatology. Following Dr. Zhang's relocation to the UK, he was appointed by King's College Hospital Dental Institute as Clinical Teacher where he was responsible for teaching and examining undergraduate and postgraduate dental students' clinical practices. Dr. Zhang is a member of Royal College of Surgeons of England and a member of the Royal Society of Chemistry.



2018-2019 MasterClass Series

The following programmes are jointly designed and delivered by King's College London Dental Institute Master Degree Programme Directors & China Britain Medical and Dental Academy (CBMDA) Faculties.

Programmes are designed for dental professionals qualified in the People's Republic of China

February 2018-2019
Two Year Four Term
Dental Orthodontics
Postgraduate Certificate Masterclass
CPD Accredited Programme

September 2018-2019
Two Year Four Term
Aesthetic Dentistry
Postgraduate Certificate Masterclass
CPD Accredited Programme

March 2018-2019
Two Year Four Term
Implant Dentistry
Postgraduate Certificate Masterclass
CPD Accredited Programme

October 2018-2019
One Year Two Term
Dental Orthodontics
Postgraduate Certificate Masterclass
CPD Accredited Programme

April 2018-2019
One Year Two Term
Aesthetic Dentistry
Postgraduate Certificate Masterclass
CPD Accredited Programme

November 2018-2019
One Year Two Term
Implant Dentistry
Postgraduate Certificate Masterclass
CPD Accredited Programme

May 2018-2019
One Year Two Term
General Dentistry
Postgraduate Certificate Masterclass
CPD Accredited Programme

June 2018-2019
One Year Two Term
Practice Management
Postgraduate Certificate Masterclass
CPD Accredited Programme

Disclaimer: Courses will run subject to sufficient numbers of acceptance of applications being received from qualified applicants
We reserve the right to change course content and sequencing.

LOCAL CONTACT: ENGLISH

George Harington Director, Strategic Partnership

P: +44 (0) 77122 53095 W: www.cbmda.org

E: george.harington@cbmda.org

A: 1 Primrose Street, London, EC2A 2EX



LOCAL CONTACT: MANDARIN

Kevin Qin AmryBio (ShangHai) Ltd.

M: +86 137 9532 5993 O: +86 (21) 5999 0301

E: info@amrybio.com W: www.amrybio.com

A: 1103, No.2500 Zhenbei Road, Shanghai, 200333